



## Beaumont Place

Lydney, GL15 5DH

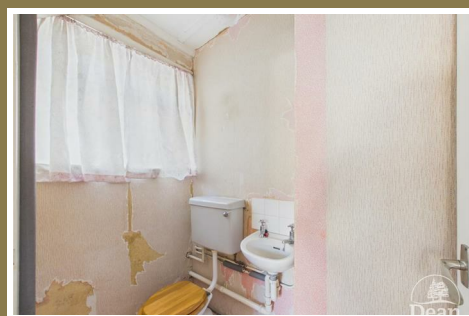
£245,000



\*\*\*VIRTUAL TOUR AVAILABLE\*\*\* Take a look at this deceptive, two bedroom semi-detached property situated on a large plot within a short walking distance of Lydney town centre.

This property offers masses of potential to extend and modernise throughout, perfect for first-time buyers!

Lydney has many amenities to include primary schools, secondary school, supermarkets, independent cafes and shops, doctors surgeries, pharmacies and parks. There are excellent transport links to the nearby towns and cities with a bus station and train station.



Approached via UPVC double glazed door:

**Entrance Hallway:**

Stairs to first floor, double panelled radiator.

**Downstairs W/C:**

UPVC double glazed window to side aspect, W/C, wash hand basin and double panelled radiator.

**Living Room:**

UPVC double glazed bay window to front aspect, gas fireplace, built-in cupboard storage and double panelled radiator.

**Kitchen/Diner:**

Range of base and eye level units, space for washing machine and oven, new wall mounted boiler and fuse box. UPVC double glazed frosted door to rear garden and two UPVC double glazed windows.

**First Floor Landing:**

UPVC double glazed window to side aspect, loft hatch and storage cupboard.

**Bedroom one:**

Large and bright double bedroom with UPVC double glazed bay window to front aspect, double panelled radiator, storage cupboard and original feature fireplace.

**Bedroom Two:**

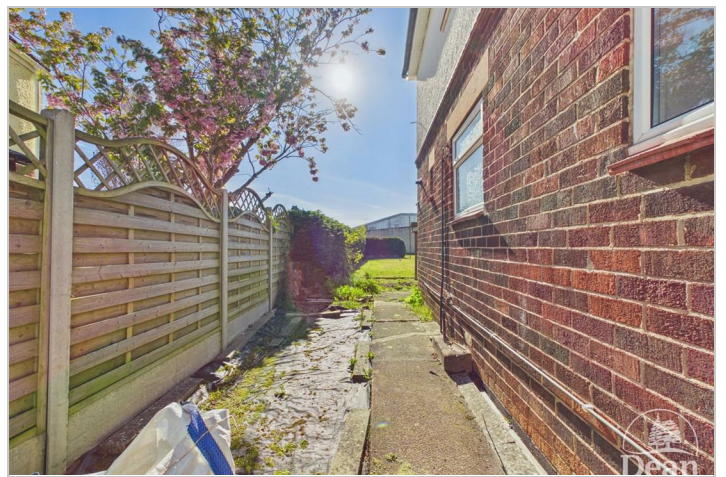
UPVC double glazed window to rear aspect, double panelled radiator and original feature fireplace.

**Bathroom:**

UPVC frosted double glazed window to rear, W/C, wash hand basin and bath.

**Outside:**

Extensive laid to lawn rear garden providing plenty of potential to extend the property if required, side access and off road parking for multiple cars.



Consumer Notes: Dean Estate Agents Ltd have prepared the information within this website/brochure with care and co-operation from the seller. It is intended to be indicative rather than definitive, without a guarantee of accuracy. Before you act upon any information provided, we request that you satisfy yourself about the completeness, accuracy, reliability, suitability or availability with respect to the website or the information, products, services, or related graphics contained on the website for any purpose.

These details do not constitute any part of any Offer, Contract or Tenancy Agreement.

Photographs used for advertising purposes may not necessarily be the most recent photographs, although every effort is made to update photographs at the earliest opportunity. Any reliance you place on such information is therefore strictly at your own risk. All photographic images are under the ownership of Dean Estate Agents Ltd and therefore Dean Estate Agents retain the copyright. You must obtain permission from the owner of the images to reproduce them.

Tenanted Properties – we are not always able to show the most recent condition of a property due to tenants' privacy and we may choose to show the photographs of the property when it was last vacant to at least allow clients some idea of the internal condition. Therefore, we would of course, urge you to view before making any decisions to purchase or rent the property and before any costs.

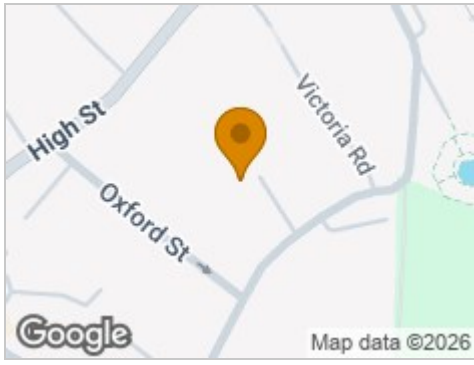
Energy Performance Certificates are supplied to us via a third party and we do not accept responsibility for the content within such reports.

PRC Certificates – Some ex-local authority properties have been repaired in recent years using the PRC Scheme wherein a certificate has been produced by a qualified property engineer. This certificate does not imply the suitability for a mortgage approval and you must satisfy yourself of the work carried out that may meet your lenders criteria.

As with leasehold property or new build development sites, you are likely to be responsible for a contribution to management charges and/or ground rent or a contribution to the development service charge. Please enquire at the time of viewing.

You may also incur fees for items such as leasehold packs and, in addition, you will also need to check the remaining length of any lease before you complete a mortgage application form. Please ask a member of our team for any help required before committing to purchase a property and incurring expense.

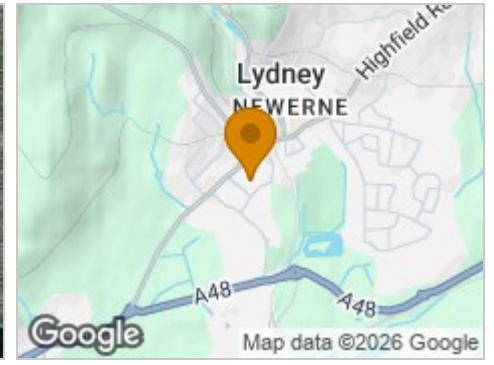
## Road Map



## Hybrid Map



## Terrain Map



## Floor Plan



## Viewing

Please contact our Lydney Office on 01594 368202 if you wish to arrange a viewing appointment for this property or require further information.

## Energy Efficiency Graph



These particulars, whilst believed to be accurate are set out as a general outline only for guidance and do not constitute any part of an offer or contract. Intending purchasers should not rely on them as statements of representation of fact, but must satisfy themselves by inspection or otherwise as to their accuracy. No person in this firm's employment has the authority to make or give any representation or warranty in respect of the property.